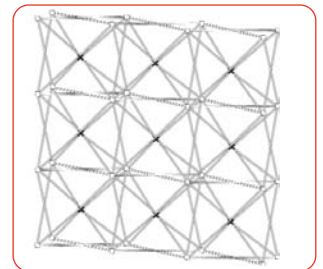
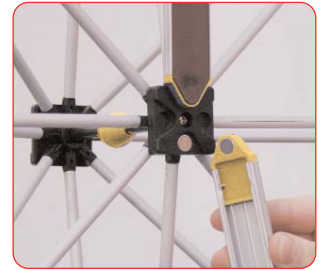


Evolution Spyder



A high tech lightweight pop-up with all the features of the Xpress, the pop-up frame is constructed in a cross braced format for extra rigidity and stability on uneven surfaces.

features & benefits

- Small 8mm tube frame with high tech styling
- Quality anodised aluminium finish
- Tallest 3 quad high pop-up in the range
- Narrow footprint for use in more compact spaces
- Enhanced graphic support
- Option for graphics to be displayed on both sides
- Available as frame only or graphic hanging kit
- Available in a combination of quads from 1 x 1 desktop to 3 x 5 freestanding exhibition display
- Fabric pop-up panels are also available

Graphic Panel Sizes All measurements in millimeters (mm)

	1 Quad	2 Quad	3 Quad	4 Quad	5 Quad
Panel Height	766	1485	2375	3159	3943

Curved Panel Widths

Front Panel	Rear Panel	D-End
750	840	400

NB - Curved panel widths are consistent regardless of how many quads high the pop-up is.

Assembly Instructions



Remove the backing paper from the graphic hanger.



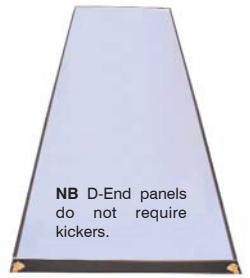
Apply the hanger to the top inside edge of the panel ensuring that it is flush to the panel edge.



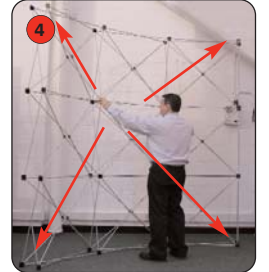
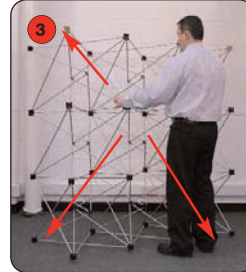
Remove the backing paper from the kicker and apply to the bottom edge of the panel.



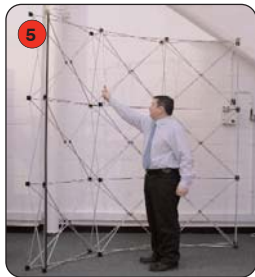
Remove the backing paper from the mag tape. Apply to both sides of the panel, keeping it flush to the edge.



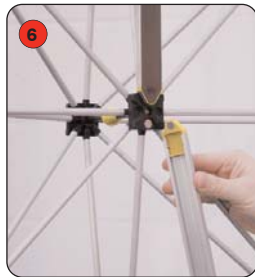
Kit includes: Mag Bars (for number see below), pop-up frame, D-End graphic panels x 2 and Front and/or rear graphic panels (not supplied)



Take the frame, ensuring that the coloured nodes are at the top. Stand the frame on the floor (2) and open up (3) until the locking arms click the frame securely into place (4)



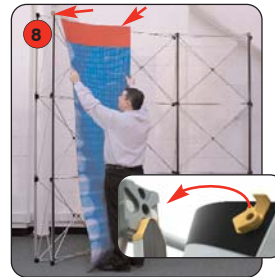
Add the mag bars onto the system for front, D-ends and if applicable, the rear.



Ensure that the mag bars lock onto the magnetic pip securely.



Unwrap each graphic panel carefully and attach to the system.



Carefully hook the top hanger onto the top node on each side of the quad.



Smooth the graphic onto the mag bars, ensuring that it sits flat and is aligned to the centre line of each mag bar.



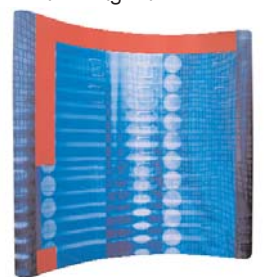
Repeat for the 1st D-End panel, ensuring that the fit is correct.



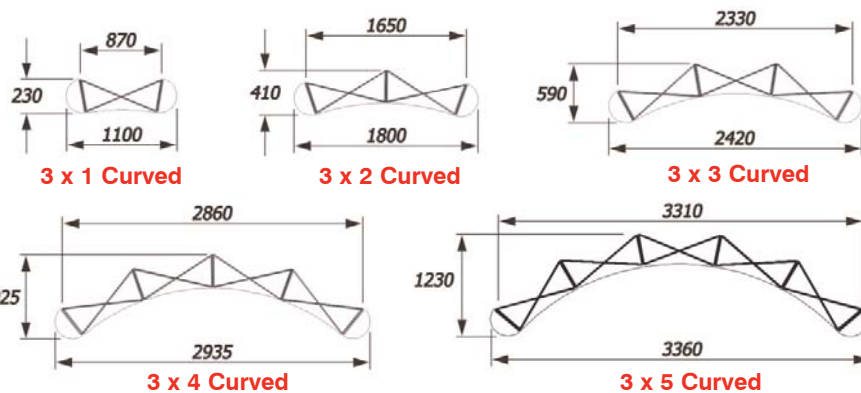
Repeat steps 8 and 9 for the rest of the graphics on the unit. This applies to front and rear graphics if applicable.



Finally, attach the 2nd D-End panel.



Important note:
Remove all mag bars before collapsing the frame.



Technical Data

- 3 x 1**
12 mag bars, 1 front curved & 2 D-End hangers
 - 3 x 2**
15 mag bars, 2 front curved & 2 D-End hangers
 - 3 x 3**
18 mag bars, 3 front curved & 2 D-End hangers
 - 3 x 4**
21 mag bars, 4 front curved & 2 D-End hangers
 - 3 x 5**
24 mag bars, 5 front curved & 2 D-End hangers
- (All dimensions are approx and are in mm)